



Polaris Parks

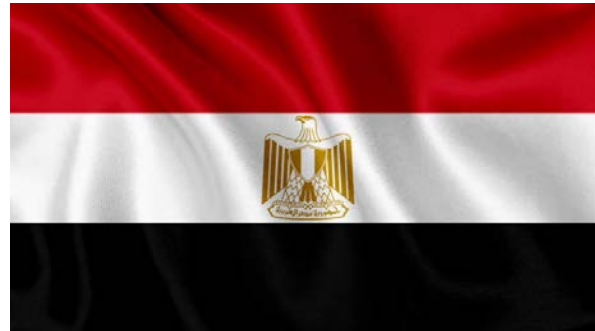
Company Overview

Polaris Parks structure

Polaris Parks S.A.E., a joint stock company incorporated under the laws of the Arab Republic of Egypt with limited liability, Privately owned by:



**MEMPHIS CAPITAL
LIMITED**



SIAC HOLDING



AL ZAMIL GROUP



Polaris Parks

In line with country's vision, Polaris Parks works for the development and support the industrial sector to be the engine of growth, as it is a major contributor to the Egyptian economy growth and compete in the global economy by:

Developing and establishing an integrated environmentally friendly industrial parks according to the latest international standards implemented with the best infrastructure networks

Attracting foreign and local investments

Contribute deepening local manufacturing and increasing exports

Creating direct and indirect job opportunities and contributing to a decrease in the unemployment rate in Egypt

Operating and maintaining the industrial park through Polaris Project Management Company specialized in the operation and maintenance of industrial zones

Polaris Parks Awards



**EUROMONEY Award
Ranked Polaris the best
industrial developer in the
Middle East and North Africa**



**Financial Times Magazine Award
Ranked Polaris No. 45 in the
"Global Free Zones of the
Future"**



**ISAQ Award
International Star of Quality
Gold category in Geneva,
Switzerland**

Polaris Parks Tenants include;

LOGISTICA
E2E Services


شركة أحمد محمد
صالح باعشن وشركاه
AMS BAESHEN & CO.

izis PHARMA


EVA PHARMA


MANSOUR

P&G

HAYAT

Schlumberger

BIM
TOPTAN FİYATINA
PERAKENDE SATIŞ

scib[®]
Paints

edita

Henkel

Huhtamaki

RAYA
Advanced Manufacturing


GAP

**POLARIS
PARKS**

Polaris Parks Tenants include;

SERIOPLAST



SADAPACK



Gtech

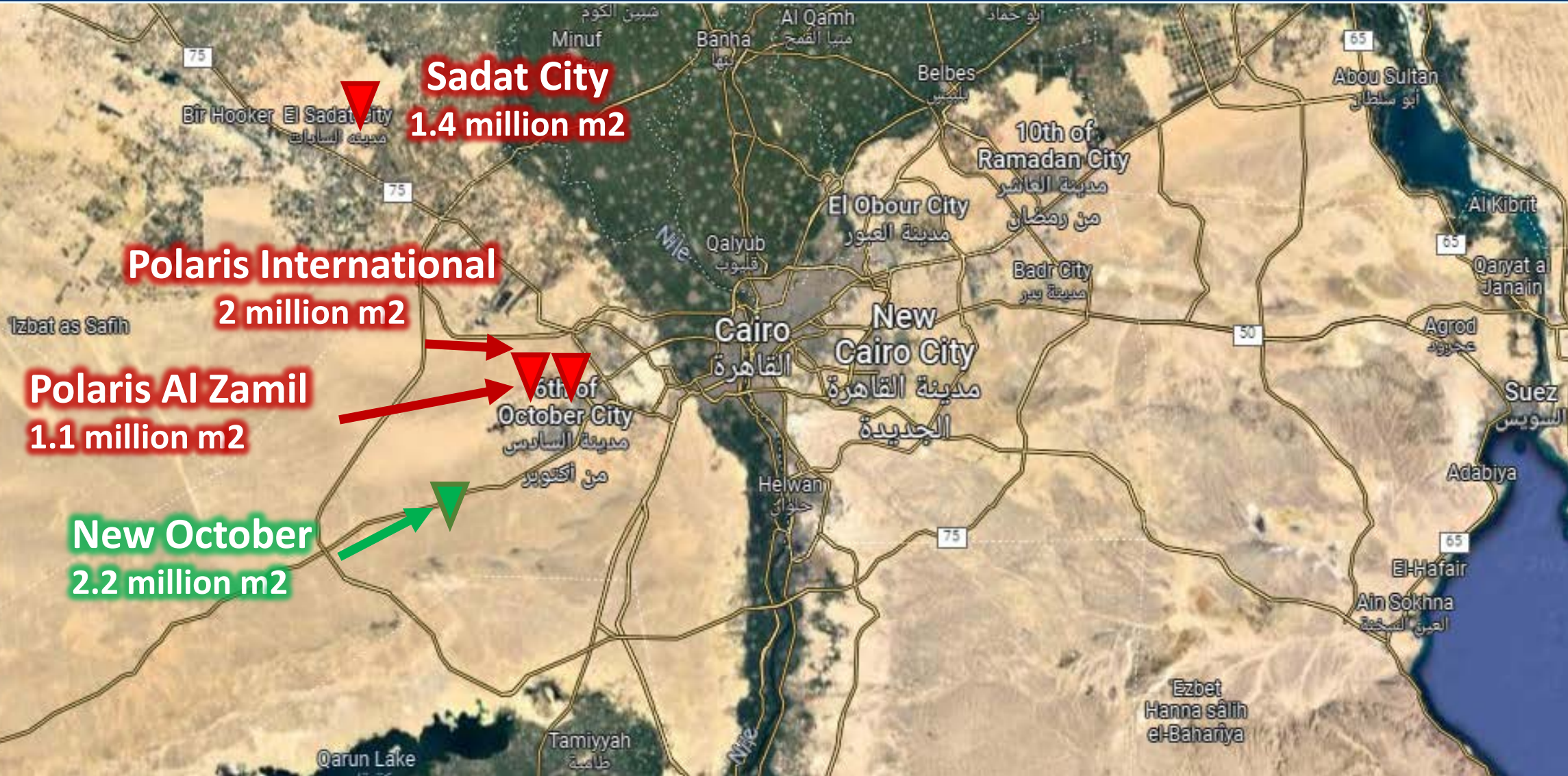


Polaris Parks – Facts and Figures

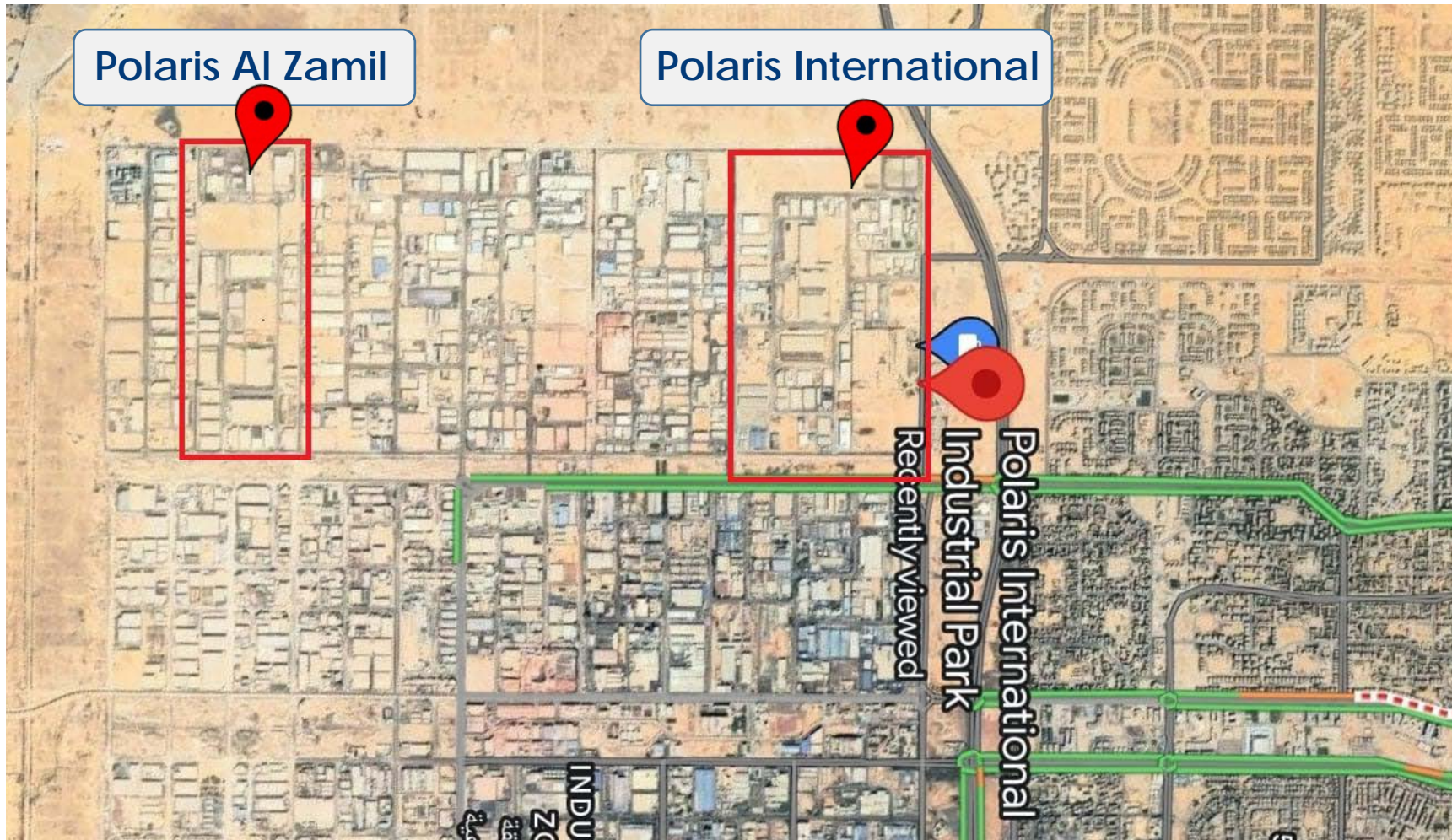


Projects	3 Areas
Total Project Area	4,500,000 m2
Number of Factories	180
Number of SME's	360
Direct Investment	180 Million USD
Investment Attracted	4.5 Billion USD
Job Opportunities	60.000 + jobs

Polaris Parks Projects



6 October Projects location



Polaris International Industrial Park

- PIIP is the first and leading private industrial development project to be established not only in Egypt but in the region as a whole.
- The project is Inaugurated in 2007, with an area of 2 million square meters, it is fully developed and occupied within 3 years. Today the industrial park hosts multinational and local investors as well as 220 Bosla units
- Led by a team of professionals, it offers outstanding infrastructure with high-end services, delivering the top quality standards.



Polaris International Master Plan

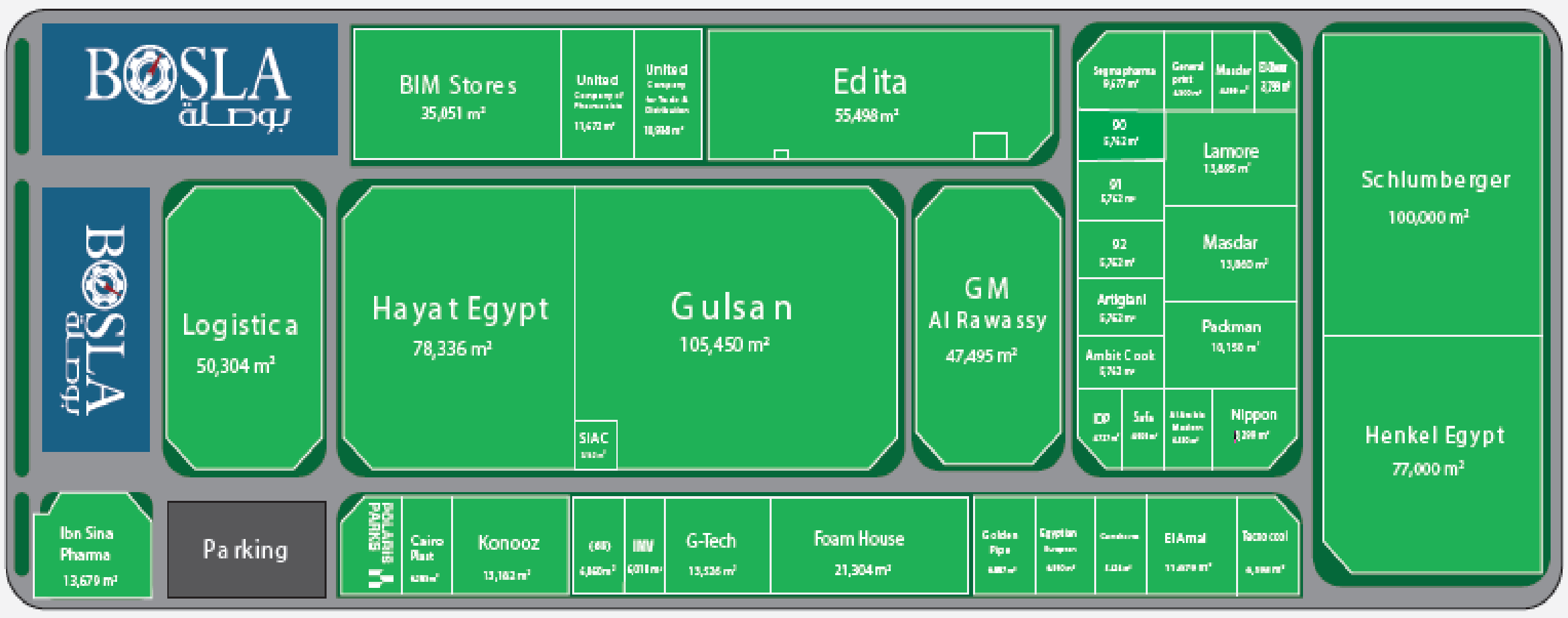


Polaris Al Zamil Industrial Park



- Building upon its success and experience, Polaris Parks joined Forces with Zamil Holding of Saudi Arabia to further its expansion in 6th of October city.
- With an area of 1.1 million m², this vast space was able to attract a number of different investors and operate one of the most functional private industrial parks in the region.
- The project is fully developed and occupied. It also hosts 118 Bosla Units

Polaris Al Zamil Master Plan



Polaris Sadat City

- In continuation of the success of the Polaris Parks, its expansion continued in Sadat City, a project to develop an integrated industrial park with an area of 1.4 million square meters in 2018, in addition to an extension of the Bosla SMEs Hubs.
- The project is located in a unique location, placing the project adjacent to industrial zones, all industrial vitalities and in close proximity to residential areas and main roads, It has been fully marketed and sold, and factories have started to operate.



Polaris Sadat City Master Plan



Standard Factory Buildings

- Polaris Parks builds standard factory buildings (SFBs) starting with 1,000 square meters o closed section or multiples, ideal for various industries or warehousing based on the needs of each investor.
- These buildings are equipped with all the necessary infrastructure and ready utilities such as electricity, water, gas and sewage, which makes it a ready-to-operate industrial model to facilitate the invistors' start-up process.
- Polaris Parks can also built such units as per tenant specification available for rent or sell.





Bosla SME Compounds

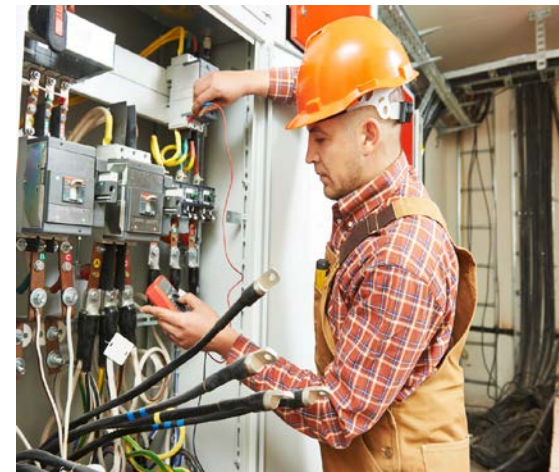
- Believing from the Polaris Parks in the importance of small and medium enterprises (SMEs) and in line with the country's direction in this regard, "Bosla" projects have been launched as complexes for SMEs to create a specialized hub where SMEs can comfortably start up their businesses.
- The privileged location, along with infrastructure services and international standards for the industrial parks, enhances the provision of all the necessary ingredients for the small and medium-sized companies success, as they enter the new competitive business wave.

Bosla Project



Facility Management Services

- **Utility Operating and Maintenance**
- **Construction and installation**
- **Security services**
- **Cleaning and waste collection**
- **Pest control services**
- **Landscaping**
- **Business center**
- **Catering**



Polaris New October

Polaris Parks is about to open the reservation door for its new project with an area of 2.2 million square meters in New October

Coming Soon





**POLARIS
PARKS**



EUROMONEY
Best Industrial Developer, 2013
- Egypt & MENA



FDI
GLOBAL FREE ZONES
OF THE FUTURE 2012/13